



SPINN Series
2,2 to 15 kW

Air. Anytime. Anywhere.



Join the ABAC advantage

Our brand values

ABAC Aria Compressa was founded in 1980 but its compressed air heritage dates back over 60 years. Customer expectations have always driven product development, resulting in a portfolio which fulfills your compressed air needs and offers you the value you are looking for. Additionally, our worldwide presence makes sure we are at your service at all times.

Benefit from these five strong values and team up with ABAC today.

★ Technology leader

With years of experience, ABAC can rely on an extensive technical know-how to provide you with compressed air solutions that get the job done. Understanding the needs of our customers, we lead the compressed air field by example.

★ Recognised quality

You expect quality and reliability from your ABAC compressor. Our production facilities combine history and experience with the latest production methods. We certify and guarantee every product we manufacture to make sure that ABAC is a partner you can rely on.

Air. Anytime. Anywhere.

★ Value for money

As a customer, you want a product that offers you value for money. ABAC does just that, offering a full portfolio of products at a competitive price. With the right mix of flexibility and experience we deliver value at the right price to the industrial, professional and DIY compressed air markets.



★ Extensive network

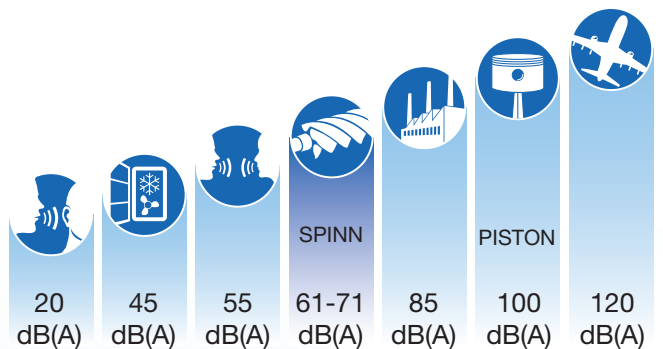
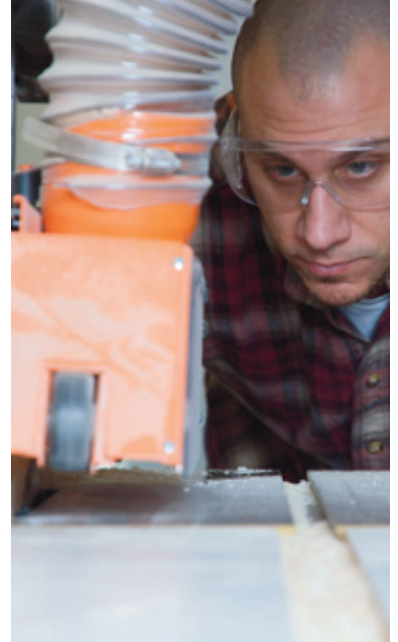
A vast network of distributors and resellers (over 1000 in more than 100 countries) means that there is always an ABAC representative nearby to provide you with service, support or products. As such, all you need to do is focus on your business, ABAC takes care of the rest.

★ User-friendly design

Developing products with the customer in mind has always been a mainstay of ABAC's philosophy. As a result, ABAC compressors are designed to be easy to use providing you compressed air that is available when and where you need it.

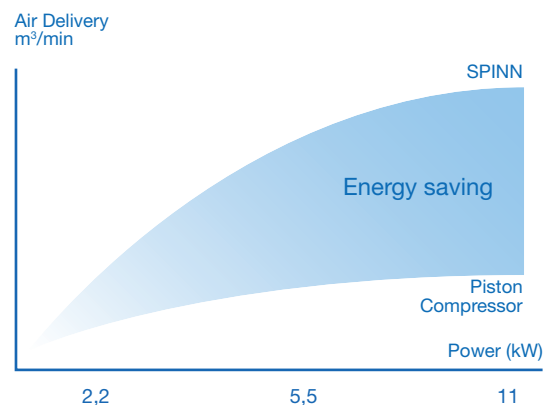
Meet your new workmate

Your comfort matters. Therefore, ABAC created a small screw compressor with an extremely low noise level, comparable to your air conditioning system. Very compact and easy to install, ABAC SPINN compressors offer excellent savings on installation and piping costs, especially on the compact model with dryer.



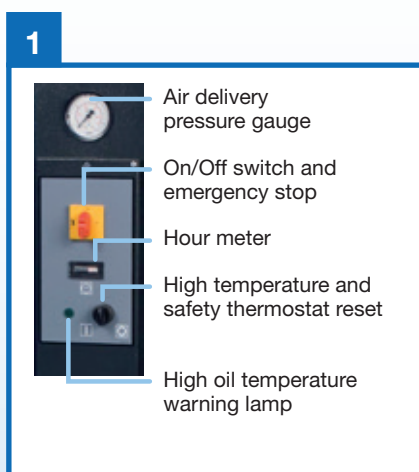
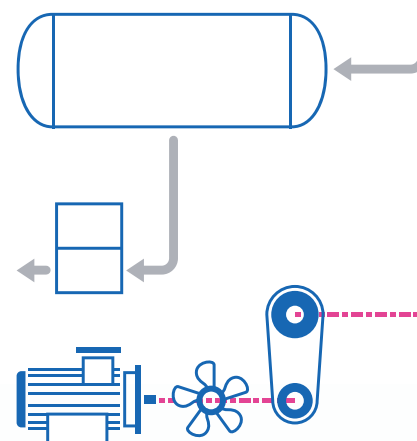
A safe investment for continuous use

ABAC SPINN compressors are 30% more efficient than piston compressors and have a longer lifetime due to less vibration and fewer moving parts.



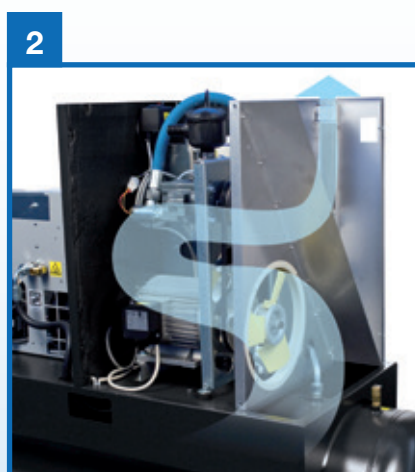


— Compressed air
 — Air/Oil
 — Oil



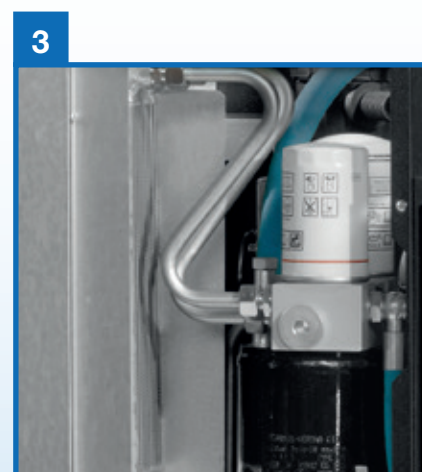
Easy operating control panel

All the info you need to operate your compressor at a glance.



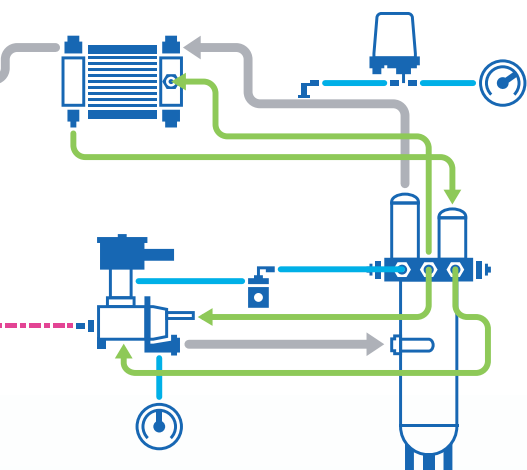
Efficient cooling

A coaxial fan provides excellent cooling of all the internal components, better than water cooled systems. This leads into higher efficiency and better reliability in operation.



Easy and cost effective maintenance

Long service intervals and external oil level check. Quick access to air & oil filters, air & oil separator, oil fill & drain.



SPINN.E Series Dryer versions

Extra compact, cost efficient and easy installation where moisture free air is required.



Reliability, efficiency and robustness

The most advanced technologies in rotor design and oil household. Optimized seal arrangements and bearings.



Infologic² Basic Controller

Advance monitoring and simple day-today configuration and control for your compressor.

- Pressure and temperature readings.
- Running hours, load hours.
- Maintenance warnings.
- Failure alarms.
- Fast pressure setting directly on the controller.



Less noise and more energy saving

The automatic condensate drain discharges only water, no air. This silent process respects your working environment.



SPINN Series

2,2 to 7,5 kW

Power sizes 2,2 to 7,5 kW



Type	liters	bar	psi	l/min	cfm	HP	kW	dB(A)	L	W	H	Kg
SPINN Floor mounted  Only 0,38 m ²	0	8	116	300	10,6	3	2,2	61	620	612	995	99
				445	15,8	4	3	61	620	612	995	103
				560	19,8	5,5	4	62	620	612	995	105
				700	24,8	7,5	5,5	64	620	612	995	110
				1008	35,7	10	7,5	66	620	612	995	160
		10	145	240	8,5	3	2,2	61	620	612	995	99
				320	11,3	4	3	61	620	612	995	103
				470	16,6	5,5	4	62	620	612	995	105
				600	21,2	7,5	5,5	64	620	612	995	110
				920	32,6	10	7,5	66	620	612	995	160
SPINN Tank mounted  Only 0,87 m ² (200 L vessel size)	200	8	116	297	10,5	3	2,2	61	1429	612	1300	155
				443	15,6	4	3	61	1429	612	1300	157
				560	19,8	5,5	4	62	1429	612	1300	159
				697	24,6	7,5	5,5	64	1429	612	1300	164
				1008	35,7	10	7,5	66	1429	612	1300	214
		10	145	240	8,5	3	2,2	61	1429	612	1300	155
				320	11,3	4	3	61	1429	612	1300	157
				470	16,6	5,5	4	62	1429	612	1300	159
				600	21,2	7,5	5,5	64	1429	612	1300	164
				920	32,6	10	7,5	66	1429	612	1300	214
	270	8	116	297	10,5	3	2,2	61	1531	612	1394	166
				443	15,6	4	3	61	1531	612	1394	168
				560	19,8	5,5	4	62	1531	612	1394	170
				697	24,6	7,5	5,5	64	1531	612	1394	175
				1008	35,7	10	7,5	66	1531	612	1394	225
		10	145	240	8,5	3	2,2	61	1531	612	1394	166
				320	11,3	4	3	61	1531	612	1394	168
				470	16,6	5,5	4	62	1531	612	1394	170
SPINN.E Tank mounted + dryer  Only 0,94 m ² (270 L vessel size)	200	8	116	297	10,5	3	2,2	61	1429	612	1300	187
				443	15,6	4	3	61	1429	612	1300	191
				560	19,8	5,5	4	62	1429	612	1300	193
				697	24,6	7,5	5,5	64	1429	612	1300	198
				1008	35,7	10	7,5	66	1429	612	1300	254
		10	145	240	8,5	3	2,2	61	1429	612	1300	155
				320	11,3	4	3	61	1429	612	1300	157
				470	16,6	5,5	4	62	1429	612	1300	159
				600	21,2	7,5	5,5	64	1429	612	1300	164
				920	32,6	10	7,5	66	1429	612	1300	249
	270	8	116	297	10,5	3	2,2	61	1531	612	1394	198
				443	15,6	4	3	61	1531	612	1394	202
				560	19,8	5,5	4	62	1531	612	1394	204
				697	24,6	7,5	5,5	64	1531	612	1394	209
				1008	35,7	10	7,5	66	1531	612	1394	265
		10	145	240	8,5	3	2,2	61	1531	612	1394	166
				320	11,3	4	3	61	1531	612	1394	168
				470	16,6	5,5	4	62	1531	612	1394	170
				600	21,2	7,5	5,5	64	1531	612	1394	175
				920	32,6	10	7,5	66	1531	612	1394	260

The image shows a blue and black ABAC SPINN air compressor unit with a black cylindrical tank, positioned next to a white truck in a workshop. The unit has the ABAC logo and 'SPINN' written on it. The truck is a white cab with a brown dump body, and it is parked in a large industrial space with other equipment visible in the background.



Type	liters	bar	psi	l/min	cfm	HP	kW	dB(A)	L	W	H	Kg
SPINN Floor mounted  Only 0,53 m²	0	8	116	846	29,9	7,5	5,5	64	850	720	980	160
				1140	40,3	10	7,5	65	850	720	980	170
				1620	57,2	15	11	69	850	720	980	185
				1860	65,7	20	15	71	850	720	980	200
		10	145	696	24,6	7,5	5,5	64	850	720	980	160
				996	35,2	10	7,5	65	850	720	980	170
				1416	50,0	15	11	69	850	720	980	185
				1680	59,3	20	15	71	850	720	980	200
		13	188	780	27,5	10	7,5	65	850	720	980	170
				1152	40,7	15	11	69	850	720	980	185
				1332	47,0	20	15	71	850	720	980	200
SPINN Tank mounted  Only 1,26 m² (500 L vessel size)	270	8	116	846	29,9	7,5	5,5	64	1543	720	1337	207
				1140	40,3	10	7,5	65	1543	720	1337	217
				1620	57,2	15	11	69	1543	720	1337	232
				1860	65,7	20	15	71	1543	720	1337	247
		10	145	696	24,6	7,5	5,5	64	1543	720	1337	207
				996	35,2	10	7,5	65	1543	720	1337	217
				1416	50,0	15	11	69	1543	720	1337	232
				1680	59,3	20	15	71	1543	720	1337	247
		13	188	780	27,5	10	7,5	65	1543	720	1337	217
				1152	40,7	15	11	69	1543	720	1337	232
				1332	47,0	20	15	71	1543	720	1337	247
	500	8	116	846	29,9	7,5	5,5	64	1945	720	1468	257
				1140	40,3	10	7,5	65	1945	720	1468	267
				1620	57,2	15	11	69	1945	720	1468	282
				1860	65,7	20	15	71	1945	720	1468	297
		10	145	696	24,6	7,5	5,5	64	1945	720	1468	257
				996	35,2	10	7,5	65	1945	720	1468	267
				1416	50,0	15	11	69	1945	720	1468	282
				1680	59,3	20	15	71	1945	720	1468	297
		13	188	780	27,5	10	7,5	65	1945	720	1468	267
				1152	40,7	15	11	69	1945	720	1468	282
				1332	47,0	20	15	71	1945	720	1468	297
SPINN.E Tank mounted + dryer  Only 0,99 m² (270 L vessel size)	270	8	116	846	29,9	7,5	5,5	64	1543	720	1337	242
				1140	40,3	10	7,5	65	1543	720	1337	250
				1620	57,2	15	11	69	1543	720	1337	265
				1860	65,7	20	15	71	1543	720	1337	280
		10	145	696	24,6	7,5	5,5	64	1543	720	1337	242
				996	35,2	10	7,5	65	1543	720	1337	250
				1416	50,0	15	11	69	1543	720	1337	265
				1680	59,3	20	15	71	1543	720	1337	280
		13	188	780	27,5	10	7,5	65	1543	720	1337	250
				1152	40,7	15	11	69	1543	720	1337	265
				1332	47,0	20	15	71	1543	720	1337	280
	500	8	116	846	29,9	7,5	5,5	64	1945	720	1468	262
				1140	40,3	10	7,5	65	1945	720	1468	270
				1620	57,2	15	11	69	1945	720	1468	285
				1860	65,7	20	15	71	1945	720	1468	300
		10	145	696	24,6	7,5	5,5	64	1945	720	1468	262
				996	35,2	10	7,5	65	1945	720	1468	270
				1416	50,0	15	11	69	1945	720	1468	285
13	188	1680	59,3	20	15	71	1945	720	1468	300		
		780	27,5	10	7,5	65	1945	720	1468	270		

The world of ABAC



Care. Trust. Efficiency.

Care.

Care is what service is all about: professional service by knowledgeable people, using high-quality original parts.

Trust.

Trust is earned by delivering on our promises of reliable, uninterrupted performance and long equipment lifetime.

Efficiency.

Equipment efficiency is ensured by regular maintenance. Efficiency of the service organization is how Original Parts and Service make the difference.

Your Authorized Distributor

HS HEDMARK SERVICE AS

2000986669



www.abacaircompressors.com

Air. Anytime. Anywhere.